



**AB**  
**ABOUT BLU**  
SAFETY SHOES

**COMFORT AT WORK**

**COLLECTION  
2026**



# ABOUT PANTHER

## **PASSION**

For 40 years, we have put seriousness and attention to detail into every product.

## **EXPERIENCE**

Solid technical know-how, with proven processes and long-standing partnerships.

## **RESEARCH**

Continuous innovation in materials and solutions, for consistent performance and tangible results.



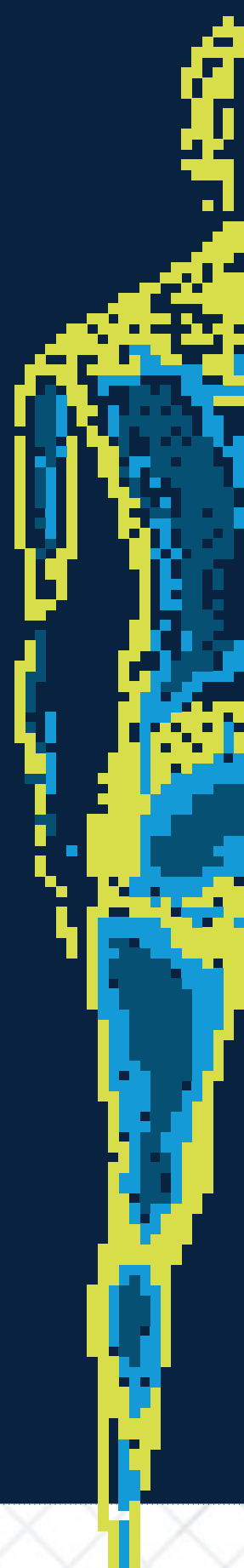
**Panther Srl** has been producing footwear for over 40 years, combining manufacturing expertise, technological innovation and a constant commitment to quality. Founded in 1982 as a producer of injected sports footwear for prestigious brands, in the 1990s the company made a strategic shift by introducing a new line of **safety footwear**, marking the gradual phase-out of sports production and the establishment of the **Aboutlu** brand.

Today Panther employs around **350 people**, is headquartered in Bovolenta (PD) and operates **two company-owned manufacturing plants in Albania**. The company continually invests in research and development and works with podiatrists and posturologists to improve workers' comfort, protection and health, offering reliable solutions designed for wellbeing and efficiency in everyday work.

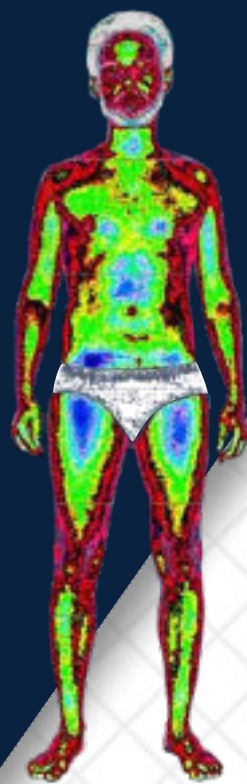
# SCIENTIFIC COMFORT

The collaboration with the team of posturologists and podiatrists from **Progetto Postura**<sup>®</sup> has made it possible to scientifically validate that our footwear promotes better muscle activation, contributing to more efficient work performance and respecting foot anatomy and its balance mechanisms.

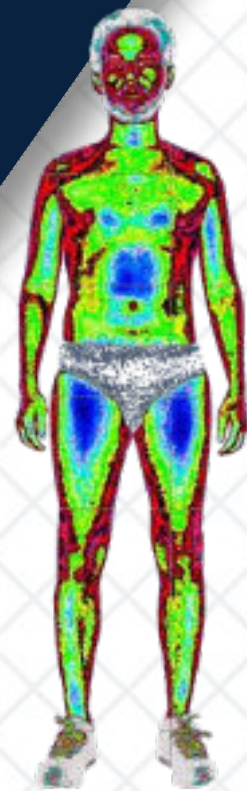
Every worker should be able to wear the most suitable footwear, in line with their industry and working environment, as well as their physical needs. Aboutblu offers footwear in which comfort is **guaranteed** and **long-lasting** over time, thanks to specific construction details and the quality and quantity of the materials used.



Tests carried out using CryoVizion® highlight these benefits. The blue color present in the images - an identifying element of the brand - represents a condition of functional balance, in which the body works correctly and in a well-balanced way: the wellbeing code that has guided Aboutblu since its origins.



Without Shoes



AboutBlu Shoes

# ABOUTBLU RESPECTS FOOT ERGONOMICS

## 1. HEEL COUNTER + HEEL REINFORCEMENT

Protects the heel from incorrect positioning, improves static and dynamic balance, and reduces shoe wear over time.

## 2. DURABLE, BREATHABLE UPPERS

High-quality materials that contain and protect the foot evenly.

## 3. COMPOSHANK (ANTI-TORSION INSERT)

Dissipates impacts, increases stability on partial support, and limits foot/ankle torsion and postural compensation.



**ANATOMIC SOLE** .4

Injected, stable and unalterable over time, following foot's natural shape.

**INJECTED BI-DENSITY PU OUTSOLE** .5

Reduces shock from ground impact and repeated knocks.

**CORRECT FLEX POINT** .6

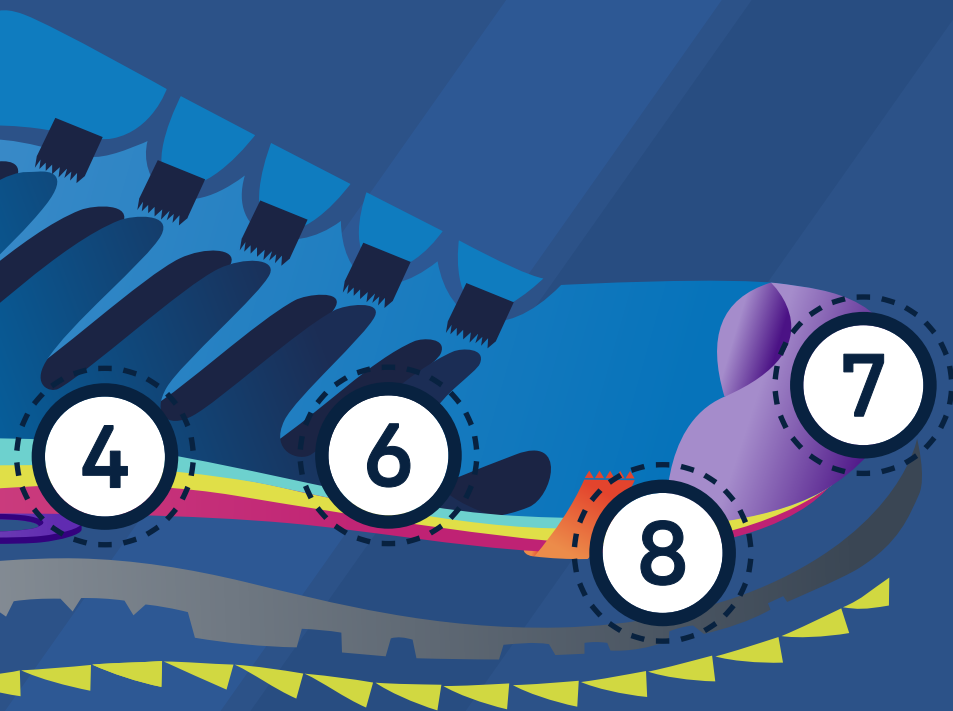
Allows a natural, comfortable bend, respecting foot biomechanics.

**POWER CAP** **CARBON CAP** .7

Lightweight, wide composite toe caps that maintain correct footwear weight balance.

**SILVER STRIP DISCHARGE (S.S.D)** .8

Keeps the electrostatic charge dissipation capacity unchanged throughout the life of the shoe.



# FORMULA

## TECHNOLOGIES

ANATOMIC  
SOLE

COMPOSHANK

CARBON  
CAP

PLASMAFEEL

SILVER  
STRIP  
DISCHARGE



FORMULA - ANATOMIC

**FLOW** GREEN LOW

DGUV 112-191 / EN ISO 20345:2022  
SIPS / FO / SR / ESD



91458 02LA  
SIZE: 35 - 49

FORMULA - ANATOMIC

## FLOW GREY LOW

DGUV 112-191 / EN ISO 20345:2022  
S3S / FO / SR / ESD



91458 00LA  
SIZE: 35 - 49



FORMULA - ANATOMIC

## FLOW GREY MID

DGUV 112-191 / EN ISO 20345:2022  
S3S / FO / SR / ESD



91465 00LA  
SIZE: 35 - 49



FORMULA - ANATOMIC

## FLOW NAVY LOW

DGUV 112-191 / EN ISO 20345:2022  
S3S / FO / SR / ESD



91458 01LA  
SIZE: 35 - 49



FORMULA - ANATOMIC

## FLOW ORANGE LOW

DGUV 112-191 / EN ISO 20345:2022  
S1PS / FO / SR / ESD



91458 03LA  
SIZE: 35 - 49



FORMULA - ANATOMIC

## TWISTER GREY LOW

DGUV 112-191 / EN ISO 20345:2022  
S3S / FO / SR / ESD



91459 00LA  
SIZE: 35 - 49



FORMULA - ANATOMIC

## TWISTER NAVY LOW

DGUV 112-191 / EN ISO 20345:2022  
S3S / FO / SR / ESD



91459 01LA  
SIZE: 35 - 49



# SAFE KNIT

## TECHNOLOGIES

ANATOMIC  
SOLE

COMPOSHANK

CARBON  
CAP

PLASMAFEEL

SILVER  
STRIP  
DISCHARGE



SAFE KNIT - ANATOMIC

# DAYTONA GREY LOW

DGUV 112-191 / EN ISO 20345:2022+AI:2024  
S3S / FO / SR / SC / ESD



51512 00LA  
SIZE: 35 - 49

**COMING SOON**



SAFE KNIT - ANATOMIC

# DAYTONA GREY MID

DGUV 112-191 / EN ISO 20345:2022+AI:2024  
S3S / FO / SR / SC / CR / ESD



51513 00LA  
SIZE: 35 - 49

**COMING SOON**



SAFE KNIT - ANATOMIC

# DAYTONA NAVY LOW

DGUV 112-191 / EN ISO 20345:2022+AI:2024  
S3S / FO / SR / ESD / SC



51512 01LA  
SIZE: 35 - 49

**COMING SOON**



SAFE KNIT - ANATOMIC

# DAYTONA GREY/YELLOW LOW

DGUV 112-191 / EN ISO 20345:2022+AI:2024  
S1PS / FO / SR // SC / ESD



51512 03LA  
SIZE: 35 - 49

**COMING SOON**



SAFE KNIT - ANATOMIC

# DAYTONA TOP GREY LOW

DGUV 112-191 / EN ISO 20345:2022+AI:2024  
S3S / FO / SC / SR / ESD



51514 00LA  
SIZE: 35 - 49

**COMING SOON**



SAFE KNIT - ANATOMIC

# DAYTONA TOP GREY MID

DGUV 112-191 / EN ISO 20345:2022+AI:2024  
S3S / FO / CR / SC / SR / ESD



51515 00LA  
SIZE: 35 - 49

**COMING SOON**



SAFE KNIT - ANATOMIC

# LE MANS NAVY LOW

DGUV 112-191 / EN ISO 20345:2022  
S3L / FO / SR / ESD



50376 02LA  
SIZE: 35 - 49



SAFE KNIT - ANATOMIC

# LE MANS NAVY MID

DGUV 112-191 / EN ISO 20345:2011  
S3 / CR / SRC / ESD



50407 01LA  
SIZE: 35 - 49



SAFE KNIT - ANATOMIC

# LE MANS BLACK LOW

DGUV 112-191 / EN ISO 20345:2022  
S3L / FO / SR / ESD



50376 00LA  
SIZE: 35 - 49



SAFE KNIT - ANATOMIC

# LE MANS BLACK MID

DGUV 112-191 / EN ISO 20345:2022+AI:2024  
S3L / FO / CR / SR / ESD



50407 00LA  
SIZE: 35 - 49



SAFE KNIT - ANATOMIC

# LE MANS MARINE LOW

DGUV 112-191 / EN ISO 20345:2022  
S3L / FO / SR / ESD



51376 28LA  
SIZE: 35 - 49



SAFE KNIT - ANATOMIC

# LE MANS PINK LOW

DGUV 112-191 / EN ISO 20345:2022  
SIPL / FO / SR / ESD



51376 27LA  
SIZE: 35 - 42



SAFE KNIT - ANATOMIC

## LE MANS GREY LOW

DGUV 112-191 / EN ISO 20345:2022  
S1PL / FO / SR / ESD



50376 01LA  
SIZE: 35 - 49



SAFE KNIT - ANATOMIC

## LE MANS BLACK/YELLOW LOW

DGUV 112-191 / EN ISO 20345:2022  
S1PL / FO / SR / ESD



51376 24LA  
SIZE: 35 - 49



SAFE KNIT - ANATOMIC

## LE MANS TOP BLACK LOW

DGUV 112-191 / EN ISO 20345:2011  
S3 / SRC / ESD



50376 20LA  
SIZE: 35 - 49



SAFE KNIT - ANATOMIC

## LE MANS TOP BLACK MID

DGUV 112-191 / EN ISO 20345:2011  
S3 / CR / SRC / ESD



50407 03LA  
SIZE: 35 - 49



SAFE KNIT - ANATOMIC

## LE MANS TOP BLK/YLW LOW

DGUV 112-191 / EN ISO 20345:2022  
S3L / FO / SR / ESD



50376 11LA  
SIZE: 35 - 49



# POWAIRLITE

## TECHNOLOGIES

ANATOMIC  
SOLE

COMPOSHANK

CARBON  
CAP

PLASMAFEEL

SILVER  
STRIP  
DISCHARGE



POWAIRLITE - ANATOMIC  
**VEGA BLACK LOW**

DGUV 112-191 / EN ISO 20345:2022  
S3L / FO / SR / ESD



91410 00LA  
SIZE: 35 - 49



POWAIRLITE - ANATOMIC  
**VEGA BLACK MID**

DGUV 112-191 / EN ISO 20345:2022  
S3L / FO / SR / ESD



91411 00LA  
SIZE: 35 - 49



POWAIRLITE - ANATOMIC  
**VEGA BLUE LOW**

DGUV 112-191 / EN ISO 20345:2022  
S3L / FO / SR / ESD



91410 01LA  
SIZE: 35 - 49



POWAIRLITE - ANATOMIC  
**VEGA BLUE MID**

DGUV 112-191 / EN ISO 20345:2022  
S3L / FO / SR / ESD



91411 01LA  
SIZE: 35 - 49



POWAIRLITE - ANATOMIC  
**SIRIUS BLACK LOW**

DGUV 112-191 / EN ISO 20345:2022  
S3L / FO / SR / ESD



91415 00LA  
SIZE: 35 - 49



POWAIRLITE - ANATOMIC  
**SIRIUS LIME LOW**

DGUV 112-191 / EN ISO 20345:2022  
S3L / FO / SR / ESD



91415 01LA  
SIZE: 35 - 49



POW AIRLITE - ANATOMIC

# SIRIUS ROYAL LOW

DGUV 112-191 / EN ISO 20345:2022  
S3L / FO / SR / ESD



91415 02LA  
SIZE: 35 - 49



POW AIRLITE - ANATOMIC

# SIRIUS TOP BLACK LOW

DGUV 112-191 / EN ISO 20345:2022  
S3L / FO / SR / ESD



91414 00LA  
SIZE: 35 - 49



POW AIRLITE - ANATOMIC

# SIRIUS TOP GREY LOW

DGUV 112-191 / EN ISO 20345:2022  
S3L / FO / SR / ESD



91414 01LA  
SIZE: 35 - 49





 CARBON  
CAP

# PROFESSIONAL

## TECHNOLOGIES

**ANATOMIC  
SOLE**

**COMPOSHANK**

**POWER  
CAP**

**PLASMAFEEL**

**SILVER  
STRIP  
DISCHARGE**



PROFESSIONAL - ANATOMIC

# DYNAMO BLACK-GREY LOW

EN ISO 20345:2022+A1:2024  
S3S / FO / SR / SC / ESD



51516 00LA  
SIZE: 35 - 49

COMING SOON



PROFESSIONAL - ANATOMIC

# DYNAMO BLACK-GREY MID

EN ISO 20345:2022+A1:2024  
S3S / FO / SR / CR / SC / ESD



51518 00LA  
SIZE: 35 - 49

COMING SOON



PROFESSIONAL - ANATOMIC

# DYNAMO BLACK-YELLOW LOW

EN ISO 20345:2022+A1:2024  
S3S / FO / SR / SC / ESD



51516 01LA  
SIZE: 35 - 49

COMING SOON



PROFESSIONAL - ANATOMIC

# ACTIVE BLACK-YELLOW LOW

EN ISO 20345:2022+A1:2024  
SIPS / FO / SR / SC / ESD



51516 03LA  
SIZE: 35 - 49

COMING SOON



PROFESSIONAL - ANATOMIC

# YENI BLACK LOW

DGUV 112-191 / EN ISO 20345:2022+A1:2024  
SIPL / FO / SR / ESD



51508 00LA  
SIZE: 35 - 49



PROFESSIONAL - ANATOMIC

# ZIRA BLACK LOW

DGUV 112-191 / EN ISO 20345:2022+A1:2024  
SIPS / FO / SR / ESD



51509 00LA  
SIZE: 35 - 49



PROFESSIONAL - ANATOMIC  
**BALTIC BLACK LOW**

DGUV 112-191 / EN ISO 20345:2022  
S3L / FO / SR / ESD



51484 00LA  
SIZE: 35 - 49



PROFESSIONAL - ANATOMIC  
**BALTIC BLACK MID**

DGUV 112-191 / EN ISO 20345:2022  
S3L / FO / SR / ESD



51485 00LA  
SIZE: 35 - 49



PROFESSIONAL - ANATOMIC  
**BALTIC FRESH BLACK LOW**

DGUV 112-191 / EN ISO 20345:2022  
SIPL / FO / SR / ESD



51484 02LA  
SIZE: 35 - 49



PROFESSIONAL - ANATOMIC  
**EXPLORER GREY/YELLOW**

DGUV 112-191 / EN ISO 20345:2022  
SIPL / FO / SR / ESD



51375 06LA  
SIZE: 35 - 49



PROFESSIONAL - ANATOMIC  
**BAKU GREY LOW**

DGUV 112-191 / EN ISO 20345:2022  
S3L / FO / SR / ESD



51484 01LA  
SIZE: 35 - 49



PROFESSIONAL - ANATOMIC  
**BAKU GREY MID**

DGUV 112-191 / EN ISO 20345:2022  
S3L / FO / SR / ESD



51485 01LA  
SIZE: 35 - 49



PROFESSIONAL - ANATOMIC

## EVO GREY FRESH

DGUV 112-191 / EN ISO 20345:2011  
SIP / SRC / ESD



51432 02LA  
SIZE: 35 - 49



PROFESSIONAL - ANATOMIC

## EVO NAVY FRESH

DGUV 112-191 / EN ISO 20345:2011  
SIP / SRC / ESD



51432 03LA  
SIZE: 35 - 49



PROFESSIONAL - ANATOMIC

## EVO VEG BLACK LOW

DGUV 112-191 / EN ISO 20345:2022  
S3L / FO / SR / ESD



51432 04LA  
SIZE: 35 - 49



PROFESSIONAL - ANATOMIC

## EVO VEG BLACK MID

DGUV 112-191 / EN ISO 20345:2022  
S3L / FO / SR / ESD



51433 04LA  
SIZE: 35 - 49



PROFESSIONAL - ANATOMIC

## EVO BLACK LOW

DGUV 112-191 / EN ISO 20345:2011  
S3 / SRC / ESD



51432 00LA  
SIZE: 35 - 49



PROFESSIONAL - ANATOMIC

## EVO BLACK MID

DGUV 112-191 / EN ISO 20345:2011  
S3 / SRC / ESD



51433 00LA  
SIZE: 35 - 49



PROFESSIONAL - ANATOMIC  
**FALCON DENIM LOW**

DGUV 112-191 / EN ISO 20345:2022  
S3L / FO / SR / ESD



51380 01LA  
SIZE: 35 - 49



PROFESSIONAL - ANATOMIC  
**FALCON DENIM MID**

DGUV 112-191 / EN ISO 20345:2022  
S3L / FO / SR / ESD



51381 01LA  
SIZE: 35 - 49



PROFESSIONAL - ANATOMIC  
**FALCON BLACK LOW**

DGUV 112-191 / EN ISO 20345:2022  
S3L / FO / SR / ESD



51380 02LA  
SIZE: 35 - 49



PROFESSIONAL - ANATOMIC  
**FALCON BLACK MID**

DGUV 112-191 / EN ISO 20345:2022  
S3L / FO / SR / ESD



51381 02LA  
SIZE: 35 - 49



PROFESSIONAL - ANATOMIC  
**DISCOVERY BLACK LOW**

DGUV 112-191 / EN ISO 20345:2022  
S3L / FO / SR / ESD



51375 05LA  
SIZE: 35 - 49



PROFESSIONAL - ANATOMIC  
**DISCOVERY BLACK MID**

DGUV 112-191 / EN ISO 20345:2022  
S3L / FO / SR / ESD



51385 00LA  
SIZE: 35 - 49



PROFESSIONAL - ANATOMIC  
**INDIANAPOLIS BLACK LOW**

DGUV 112-191 / EN ISO 20345:2011  
S3 / SRC / ESD



50351 03LA  
SIZE: 35 - 49



PROFESSIONAL - ANATOMIC  
**INDIANAPOLIS BLACK MID**

DGUV 112-191 / EN ISO 20345:2011  
S3 / SRC / ESD



50352 03LA  
SIZE: 35 - 49



PROFESSIONAL - ANATOMIC  
**INDIANAPOLIS OCTANE LOW**

DGUV 112-191 / EN ISO 20345:2011  
S3 / SRC / ESD



50351 02LA  
SIZE: 35 - 49



PROFESSIONAL - REGULAR  
**T - LIGHT BLACK**

EN ISO 20345:2022  
S3L / FO / ESD



19261 12LA  
SIZE: 36 - 48



PROFESSIONAL - REGULAR  
**B - LIGHT BLACK**

DGUV 112-191 / EN ISO 20345:2022+A1:2024  
S3L / FO / SR



19371 14LA  
SIZE: 36 - 48



PROFESSIONAL - REGULAR  
**B - LIGHT BROWN**

DGUV 112-191 / EN ISO 20345:2022  
S3L / FO / SR



19371 03LA  
SIZE: 36 - 48



PROFESSIONAL - REGULAR

# TROPEA BROWN LOW

EN ISO 20345:2011  
S3 / SRC



25116 36LA  
SIZE: 36 - 48



PROFESSIONAL - REGULAR

# VIBO BROWN MID

EN ISO 20345:2011  
S3 / SRC



25138 11LA  
SIZE: 36 - 48





# CONCRETE

## TECHNOLOGIES

COMPOSHANK

POWER  
CAP

SILVER  
STRIP  
DISCHARGE

PLASMAFEEL

ANATOMIC  
SOLE



CONCRETE - ANATOMIC

## POMPEI BLACK LOW

DGUV 112-191 / EN ISO 20345:2022+A1:2024  
S3S / FO / SC / SR / ESD



33502 00LA  
SIZE: 38 - 48



CONCRETE - ANATOMIC

## POMPEI BLACK MID

DGUV 112-191 / EN ISO 20345:2022+A1:2024  
S3S / FO / SC / CI / SR / ESD



33503 00LA  
SIZE: 38 - 48



CONCRETE - ANATOMIC

## KION 6" BLACK

DGUV 112-191 / EN ISO 20345:2022+A1:2024  
S7S / FO / CI / AN / SC / SR / ESD



33504 00LA  
SIZE: 38 - 48



CONCRETE - ANATOMIC

## PETRA 6" BROWN

DGUV 112-191 / EN ISO 20345:2022+A1:2024  
S3S / FO / CI / AN / SC / SR / ESD



33504 01LA  
SIZE: 38 - 48



CONCRETE - ANATOMIC

## GIZA BROWN LOW

DGUV 112-191 / EN ISO 20345:2022+A1:2024  
S3S / FO / SC / SR / ESD



33502 01LA  
SIZE: 38 - 48



CONCRETE - ANATOMIC

## GIZA BROWN MID

DGUV 112-191 / EN ISO 20345:2022+A1:2024  
S3S / FO / SC / CI / SR / ESD



33503 01LA  
SIZE: 38 - 48



CONCRETE - ANATOMIC

# TEBE BROWN



33510 01LA  
SIZE: 38 - 48

DGUV 112-191 /  
EN ISO 20345:2022+AI:2024  
S3S / FO / CI / SC / SR / ESD

**COMING SOON**

CONCRETE- REGULAR

# NEW SAFHIR BLACK MID

EN ISO 20345:2022  
S3L / FO / SR



20149 27LA  
SIZE: 38 - 48



CONCRETE - REGULAR

# NEW SAFHIR BROWN MID

EN ISO 20345:2011  
S3 / SRC



20149 26LA  
SIZE: 38 - 48



CONCRETE - REGULAR

# NEW SALOR BROWN LOW

EN ISO 20345:2022  
S3L / FO / SR



20148 18LA  
SIZE: 38 - 48



CONCRETE - REGULAR

# NEW BOOT BTP



20269 05LA  
SIZE: 38 - 48

EN ISO 20345:2022  
S3L / FO / SR / CI



CONCRETE - REGULAR

# SPARTACUS BLACK MID

EN ISO 20345:2022  
S3L / FO / SR



27309 01LA  
SIZE: 38 - 48





# OIL & GAS

## TECHNOLOGIES

COMPOSHANK

POWER  
CAP

SILVER  
STRIP  
DISCHARGE

PLASMAFEEL

ANATOMIC  
SOLE

ATOUTFIELD

OIL & GAS - ANATOMIC

## TORNADO BLACK

DGUV 112-191 / EN ISO 20345:2011  
S3 / SRC



33428 01LA  
SIZE: 38 - 48



OIL & GAS - REGULAR

## RANGER BLACK

ASTM F2413-24 - I/C/PR SR / EN ISO 20345:2011  
S3 / SRC



25042 00LA  
SIZE: 38 - 48



OIL & GAS - REGULAR

## OCEAN BLACK

EN ISO 20345:2011  
S3 / HRO / SRC



30167 09LA  
SIZE: 38 - 48



OIL & GAS - REGULAR

## KALAHARI

EN ISO 20345:2022+A1:2024  
S3L / FO / SR



27310 00LA  
SIZE: 38 - 48



# WATERPROOF

## TECHNOLOGIES



WATERPROOF - ANATOMIC

## ROSSINI BLACK

DGUV 112-191 / EN ISO 20345:2022+A1:2024  
S7L / FO / CI / HI / HRO / SC / SR



32374 01LA  
SIZE: 38- 48



WATERPROOF - ANATOMIC

## LEONARDO CI BLACK

EN ISO 20345:2011  
S3 / WR / CI / HRO / SRC



32274 03LA  
SIZE: 38 - 48



WATERPROOF - ANATOMIC

## GALILEO BLACK

DGUV 112-191 / EN ISO 20345:2011  
S3 / WR / HRO / SRC



32275 11LA  
SIZE: 38 - 48



WATERPROOF - REGULAR

## STELVIO BLACK

EN ISO 20345:2011  
S3 / WR / CI / HI / HRO / SRC



30266 01LA  
SIZE: 38 - 48



# HEAVY DUTY

## TECHNOLOGIES



HEAVY DUTY - REGULAR  
**NEW URAGANO** BLACK MID

EN ISO 20345:2011  
S3 / HRO / SRC



30166 04LA  
SIZE: 38 - 48



HEAVY DUTY - REGULAR  
**EGADI** BLACK

EN ISO 20345:2011  
M / S3 / HRO / SRC



30051 29LA  
SIZE: 38 - 48



# DI-ELECTRIC

## TECHNOLOGIES

ANATOMIC  
SOLE

COMPOSHANK

POWER  
CAP

PLASMAFEEL



DI-ELECTRIC - ANATOMIC

# FLASH ESR BLK/YLW LOW

EN ISO 20345:2022+A1:2024  
ASTM F2413-24 - I/C/SR/EH/PR



32520 00LA  
SIZE: 36 - 48

**COMING SOON**



DI-ELECTRIC - ANATOMIC

# FLASH ESR BLK/YLW MID

EN ISO 20345:2022+A1:2024  
ASTM F2413-24 - I/C/SR/EH/PR



32521 00LA  
SIZE: 36 - 48

**COMING SOON**



DI-ELECTRIC - ANATOMIC

# HERTZ ESR GREY LOW

DGUV 112-191 / EN ISO 20345:2011  
CAT II DPI  
SB / FO / E / P / SRC



50375 23LA  
SIZE: 36 - 48



DI-ELECTRIC - ANATOMIC

# SWITCH ESR BLACK LOW

DGUV 112-191 / EN ISO 20345:2011  
CAT II DPI  
SB / FO / WRU / E / SRC



50376 19LA  
SIZE: 36 - 48



DI-ELECTRIC - ANATOMIC

# VOLTAGE ESR BLACK MID

DGUV 112-191 / EN ISO 20345:2011  
CAT II DPI  
SB / FO / WRU / HRO / E / SRC



32275 12LA  
SIZE: 36 - 48



DI-ELECTRIC - ANATOMIC

# SAHARA ESR BROWN

32305 03LA  
SIZE: 36 - 48  
ASTM F2413-24  
- I / C / PR / SR / EH  
EN ISO 20345:2022+A1:2024  
CAT II DPI  
SB / E / WPA / PL  
/ FO / SC / SR / HRO



# ASEPTIC & FOOD

## TECHNOLOGIES

COMPOSHANK

ANATOMIC  
SOLE

POWER  
CAP

PLASMAFEEL



ASEPTIC & FOOD - ANATOMIC

## BRIO WHITE LOW

EN ISO 20345:2022  
S2 / FO / SR / ESD



52457 00-A  
SIZE: 35 - 48



ASEPTIC & FOOD - ANATOMIC

## ARIOS A WHITE LOW

EN ISO 20345:2022  
SB / A / E / FO / SR / ESD



52455 00-A  
SIZE: 35 - 48



ASEPTIC & FOOD - ANATOMIC

## NIVEO WHITE LOW

EN ISO 20345:2022  
S2 / FO / SR / ESD



52456 00-A  
SIZE: 35 - 49



ASEPTIC & FOOD - ANATOMIC

## ITALIA WHITE LOW

EN ISO 20345:2022  
S2 / FO / SR



19267 00-A  
SIZE: 35 - 48



ASEPTIC & FOOD - ANATOMIC

## ITALIA BLACK LOW

EN ISO 20345:2022  
S2 / FO / SR



19267 02-A  
SIZE: 35 - 48



ASEPTIC & FOOD - ANATOMIC

## LUCERNA WHITE LOW

EN ISO 20345:2022  
S2 / FO / SR



25026 00-A  
SIZE: 35 - 48



ASEPTIC & FOOD - ANATOMIC

# LUCERNA BLUE LOW

EN ISO 20345:2022  
S2 / FO / SR



25026 16-A  
SIZE: 35 - 48



PROFESSIONAL - ANATOMIC

# VILLACH WHITE LOW

EN ISO 20345:2022  
S2 / FO / SR



25021 02-A  
SIZE: 35 - 48



ASEPTIC & FOOD - ANATOMIC

# ST.MORITZ WHITE MID

EN ISO 20345:2022  
S2 / SRC



25027 00-A  
SIZE: 36 - 48



ASEPTIC & FOOD - ANATOMIC

# VIENNE WHITE MID

EN ISO 20345:2022  
S2 / FO / SR



25048 00-A  
SIZE: 36 - 48



# POP



AC0ESAB\_202602  
DISPLAY



AC0ESPOWBC0221IT  
WHITE DISPLAY



AC0TAAB\_202602  
CARPET 80 X 50 CM



AC0SEAB\_202602  
CHAIR

# STANDARDS & SYMBOLS

The new **EN ISO 20345:2022** standard for PPE “**Safety footwear**” has been published. ABOUTBLU® is aligned with the new legislation to ensure the highest levels of safety for its products. Footwear certified according to UNI EN ISO 20345:2012 and EN ISO 20345:2011 may continue to be placed on the market even after the introduction of the new standard until the natural expiry of the certificate. For a certain period of time, footwear with both standards will therefore be available on the market

<b>SB</b>	<b>S + Basic safety requirements</b> (resistance, harmlessness and performance of materials / ergonomics and comfort of footwear / slip protection ceramic floor + cleaner)
<b>S1</b>	<b>SB + E + A + CLOSED HEEL AREA</b>
<b>S1P</b>	<b>S1 + P</b>
» <b>SIPL</b>	<b>S1 + PS</b>
» <b>S1PS</b>	<b>S1 + PS</b>
<b>S1</b>	<b>S1 + WPA</b>
<b>S1</b>	<b>S1 + P + PLATED SOLES</b>
» <b>S3L</b>	<b>S2 + PL + PLATED SOLES</b>
» <b>S3S</b>	<b>S2 + PS + PLATED SOLES</b>
» <b>S6</b>	<b>S2 + WR</b>
» <b>S7</b>	<b>S3 + WR</b>
» <b>S7L</b>	<b>S3L + WR</b>
» <b>S7S</b>	<b>S3S + WR</b>
<b>S1</b>	<b>Durable toe cap 200J + 15kN</b>
<b>E</b>	<b>Energy absorption in the heel</b>
<b>A</b>	<b>Antistatic footwear</b>
<b>P</b>	<b>Metal anti-perforation insert resistant to perforation with a 4.5 mm diameter nail</b>

»	<b>PL</b>	Non-metal anti-perforation insert resistant to perforation with a 4.5 mm diameter nail
»	<b>PS</b>	Non-metal anti-perforation insert resistant to perforation with a 3 mm diameter nail
»	<b>WPA</b>	Upper resistant to water penetration and absorption
	<b>WR</b>	Water resistant shoe
	<b>FO</b>	Hydrocarbon-resistant sole
	<b>HRO</b>	Heat-resistant sole by contact
	<b>HI</b>	Heat insulation
	<b>CI</b>	Cold insulation
	<b>M</b>	Metatarsal protection
	<b>AN</b>	Ankle protection
	<b>CR</b>	Cut resistance
	<b>C</b>	Partially conductive shoe
»	<b>LG</b>	LADDER GRIP System
»	<b>SC</b>	Abrasion-resistant toe cap
»	<b>SR</b>	Slip resistance ceramic floor tiles + glycerine

» NEW MARKS

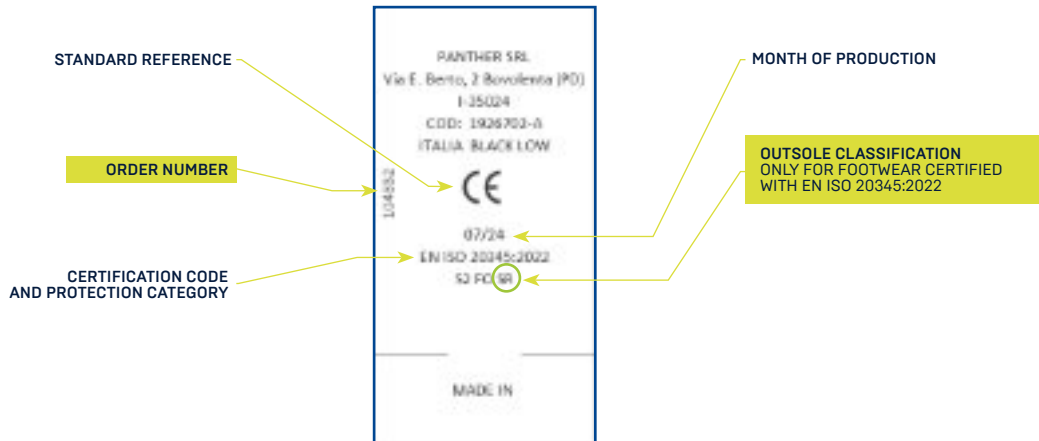
SAFETY FOOTWEAR (S) (REF STANDARD UNI EN ISO 20345:2012 / EN ISO 20345:2011)	
CATEGORY	CHARACTERISTICS
SB	BASIC SAFETY REQUIREMENTS
S1	SB + CLOSED HEEL ZONE, ANTI-STATIC PROPERTIES, ENERGY ABSORPTION IN THE HEEL, RESISTANCE OF THE SOLE TO HYDROCARBONS
S2	S1 + RESISTANCE OF THE UPPER TO WATER PENETRATION AND ABSORPTION
S3	S2 + RESISTANCE OF THE OUTSOLE TO PERFORATION, PLEATED SOLES

PROTECTION SYMBOL	REQUIREMENT/CHARACTERISTICS	SAFETY FOOTWEAR (S)				OCCUPATIONAL FOOTWEAR (O)			
		SB	S1	S2	S3	OB	O1	O2	O3
P	RESISTANCE OF THE OUTSOLE TO PERFORATION	0	0	-	X	0	0	-	X
C	CONDUCTIVE PROPERTIES	0	-	-	-	0	-	-	-
A	ANTI-STATIC PROPERTIES	0	X	X	X	0	X	X	X
I	INSULATION AGAINST ELECTRICITY	0	-	-	-	0	-	-	-
HI	INSULATION AGAINST HEAT	0	0	0	0	0	0	0	0
CI	INSULATION AGAINST COLD	0	0	0	0	0	0	0	0
E	HEEL ENERGY ABSORPTION	0	X	X	X	0	X	X	X
WR	WATER RESISTANT	0	0	0	0	0	0	0	0
M	TOE PROTECTION	0	0	0	0	-	-	-	-
AN	ANKLE PROTECTION	0	0	0	0	0	0	0	0
WRU	WATER PENETRATION AND ABSORPTION OF THE UPPER	0	-	X	X	0	-	X	X
CR	RESISTANCE OF THE UPPER TO CUTTING	-	-	-	0	-	-	-	-
HRO	RESISTANCE TO HEAT FOR SOLE CONTACT	0	0	0	0	0	0	0	0
FO	RESISTANCE OF THE SOLE TO HYDROCARBONS	0	X	X	X	0	0	0	0

X = COMPULSORY REQUIREMENT  
0 = OPTIONAL REQUIREMENT ADDED TO COMPULSORY ONES, IF INDICATED ON MARKING  
- = ADDITIONAL REQUIREMENT

OCCUPATIONAL FOOTWEAR (O) (REF STANDARD EN ISO 20347:2012 / EN ISO 20347:2022)	
CATEGORY	CHARACTERISTICS
OB	BASIC SAFETY REQUIREMENTS + ONE OF THE REQUIREMENTS FOR COMPLETE FOOTWEAR INDICATED IN THE SYMBOL TABLE
O1	OB + CLOSED HEEL ZONE, ANTI-STATIC PROPERTIES, ENERGY ABSORPTION IN THE HEEL AREA
O2	O1 + RESISTANCE OF THE UPPER TO WATER PENETRATION AND ABSORPTION
O3	O2 + RESISTANCE OF THE OUTSOLE TO PERFORATION, PLEATED SOLES
O3L	O2 + RESISTANCE OF THE OUTSOLE TO PERFORATION (NAIL 4,5 MM), PLEATED SOLES
O3S	O2 + RESISTANCE OF THE OUTSOLE TO PERFORATION (NAIL 3,0 MM), PLEATED SOLES

# PRODUCT TRACEABILITY



EACH PRODUCT BEARS THE EC LABEL  
EN ISO 20345:2022 LABELING CERTIFIES THAT THE SHOE MEETS THE ESSENTIAL REQUIREMENTS OF THE EUROPEAN DIRECTIVE (UE) 2016/425 RELATING TO PPE DEVICES: ERGONOMICS, HARMLESSNESS, COMFORT, SOLIDITY; AND THAT THE SHOE HAS BEEN SUBJECT TO EC CERTIFICATION PROCESS BY THE NOTIFIED BODY IN ACCORDANCE TO THE ISO 9001 DIRECTIVES.

THE INDICATION OF THE PRODUCTION BATCH NUMBER ALLOWS FOR THE IDENTIFICATION AND CONTROL OF EACH PHASE OF THE PRODUCTION CYCLE OF THE FOOTWEAR

# CERTIFICATIONS



ISO 9001



DGUV 112/191  
SECOSOL®



CSA Z195-14  
ONLY BRAND LABELLING



ISO 45001



ASTM F2413-18



SEDEX  
MEMBER

# ACCESSORIES



**AC0ATOP0075**

KIT ATOP A-B41  
BLACK-YELLOW E-E07 CM.75

**AC0ATOP1075**

KIT ATOP A-B41  
BLACK E-E07 CM.75



**ACOLAELA8000130**

LE MANS LACES KIT



**ACOLA1003**

LACES CM 130: BLACK / PACK OF 10 PAIRS

**ACOLA1002**

LACCI CM 110: BLACK / PACK OF 10 PAIRS



**ACOSU1097**  
ECO INSOLE IN BLISTER

Available in all sizes



**ACOSU1099**  
SANI TECH IN BLISTER

Available in all sizes



**ACOSU1080**  
TECH SOFT IN BLISTER

Available in all sizes



**ACOSU1070**  
PERFORMANCE IN BLISTER

Available in all sizes



**ACOSU1098**  
ECO SOFT IN BLISTER

Available in all sizes



[www.aboutblu.com](http://www.aboutblu.com)

AC0ABBR\_202602\_EN

PANTHER S.R.L.  
Via Egidio Berto 2, 35024 Bovolenta (PD), Italia

T. +39 049 9713211  
[info@panthersafety.it](mailto:info@panthersafety.it)  
[panthersrl@legalmail.it](mailto:panthersrl@legalmail.it)

All rights reserved. No part of this catalogue may be reproduced, stored in a database, or used in any way without the written authorization of PANTHER S.r.l.

PANTHER S.r.l. reserves the right to amend the information contained herein without prior notice

